

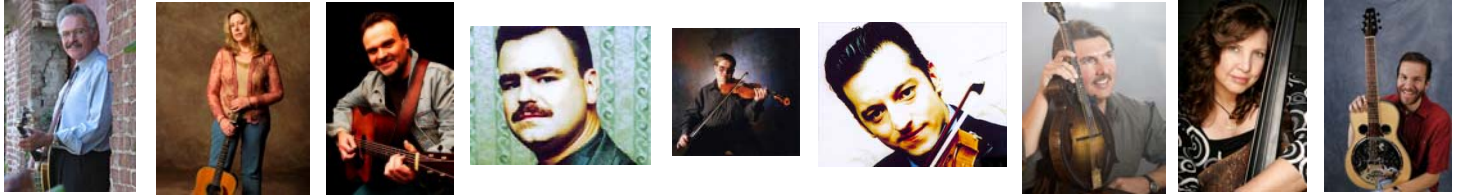


Pickin' A Bluegrass All-Star Jam

Thursday, January 8, 2009

Meymandi Concert Hall

A "Who's Who" collection of bluegrass musicians is coming to Raleigh for one night only on January 8, 2009. Almost 20 artists will perform in a song circle format during this special program. Come join us and host Cindy Baucom (deejay for the nationally syndicated radio show *Knee Deep in Bluegrass*) for an unforgettable night showcasing some of the best of bluegrass music!



Rob McCoury - Son of Del McCoury and banjo player in the Del McCoury Band, the most awarded band in the history of bluegrass. They have been nominated for six Grammy's, winning one for Best Bluegrass Album in 2006, and they were named International Bluegrass Music Association's (IBMA) Entertainer of the Year eight times.

Jason Carter - Member of the Del McCoury Band and a three-time winner of "Fiddle Player of the Year" at IBMA.

Terry Baucom - Banjo player who has performed in such groups as Doyle Lawson & Quicksilver, IIIrd Tyme Out, Lou Reid, Terry Baucom and Carolina among others. Terry recently got his own model of banjo with the Deering Banjo Company.

Steve Gulley - Vocalist/guitar player with Grasstowne. Co-writer, with Tim Stafford, of the Song Of The Year at the International Bluegrass Music Association's award show, "Thru The Window Of A Train."

Kim Fox - A member of 3 Fox Drive, Kim is an accomplished vocalist and songwriter and past winner of the Chris Austin Songwriting Competition Award at MerleFest in Wilkesboro, NC.

Rob Ickes - A member of Blue Highway, Rob is the 10-time IBMA Dobro Player Of The Year and is the most awarded individual player in the history of the IBMA.

Missy Raines - Leader of the group Missy Raines and The New Hip. She is the seven times IBMA "Bass Player of the Year."

Alan Bibey - Mandolin player with the group Grasstowne and 2007 Society For Preservation Of Bluegrass Music Association's Mandolin Player of the Year. Has also performed in groups such as Blueridge and IIIrd Tyme Out.

Josh Williams - a vocalist and multi-instrumentalist on fiddle/mandolin/guitar who recently won the 2008 IBMA Guitar Player of the Year. He currently fronts the Josh Williams Band, and from 2003-2007 he was the guitar player for Rhonda Vincent & The Rage.

Dale Ann Bradley - Has her own band. In 2007 and 2008 she won IBMA's Female Vocalist of the Year award.

Michael Cleveland - a Louisville, Kentucky native who has been blind from birth and began fiddling at the age of four. He is the six-time IBMA Fiddle Player of the Year. In 2006 he won IBMA award for Instrumental Album of the Year ("Let'Er Go Boys!"). His group Michael Cleveland & Flamekeeper won the 2007 and 2008 IBMA awards for Instrumental Group of the Year.

Mike Compton - Mandolin player with the Nashville Bluegrass Band. Plays Bill Monroe-style mandolin "better than just about anybody except for Monroe himself," (*Bluegrass Unlimited*). He performed on the soundtrack to the movie "O Brother, Where Art Thou?" and appeared on the Down from the Mountain tour and album. He was one of the "Soggy Bottom Boys."

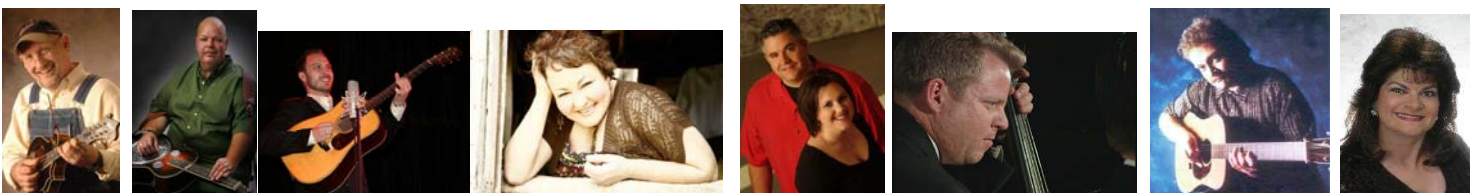
Phil Leadbetter - Dobro player with the group Grasstowne who won the 2005 IBMA awards for Dobro™ Player of the Year and Instrumental Album of the Year ("Slide Rules").

Kenny Smith & Amanda Smith - A husband and wife team with their own group, The Kenny & Amanda Smith Band. In 2003, they won IBMA's Emerging artist of the Year award. Kenny is a two-time IBMA Guitar Player of the Year.

Tim Stafford - Guitarist with the group Blue Highway. Tim is also a great songwriter and has songs recorded by many in bluegrass. He, along with Steve Gulley, received the IBMA award for Song of the Year for their "Thru The Window of a Train." Tim has also produced several award winning projects.

Mike Bub - A five-time IBMA Bass Player of the Year who has performed with some of the greats such as Del McCoury Band, Peter Rowan and Tony Rice, Shawn Camp and Vince Gill. Mike is the music director for Pickin'.

Cindy Baucom - MC for the Jam and host of the nationally syndicated radio show "Knee-Deep In Bluegrass," which is distributed by the John Boy and Billy Radio Network and goes out to more than 70 radio stations. She was named the 2005 IBMA Broadcaster of the Year.



TICKETS: \$30-\$20 PineCone members, \$35-\$25 public
PURCHASE VIA PINECONE BOX OFFICE: 919-664-8302; WWW.TICKETMASTER.COM
ADDITIONAL INFORMATION: www.pinecone.org or 919-664-8333